



LEADERSHIP

By: Enkubahri Gossaye

TODAY'S AGENDA

01

Introduction

02

Importance of
Leadership?

03

Types of
Leadership

04

Key Leadership
Qualities

05

Self Leading

CONT...

06

Leading others

07

how to Find
Your Leadership
Superpower?

08

Challenges in
leadership

09

The power of
“WE”

10

Conclusion



PART 01

Introduction to Leadership

INTRODUCTION TO LEADERSHIP

- Leadership is the ability to influence, inspire, and serve others towards a common purpose.
- It is not limited to positions or titles, but a mindset and behavior that anyone can adopt.
- True leadership is about empowering others, fostering collaboration, and creating a positive environment.



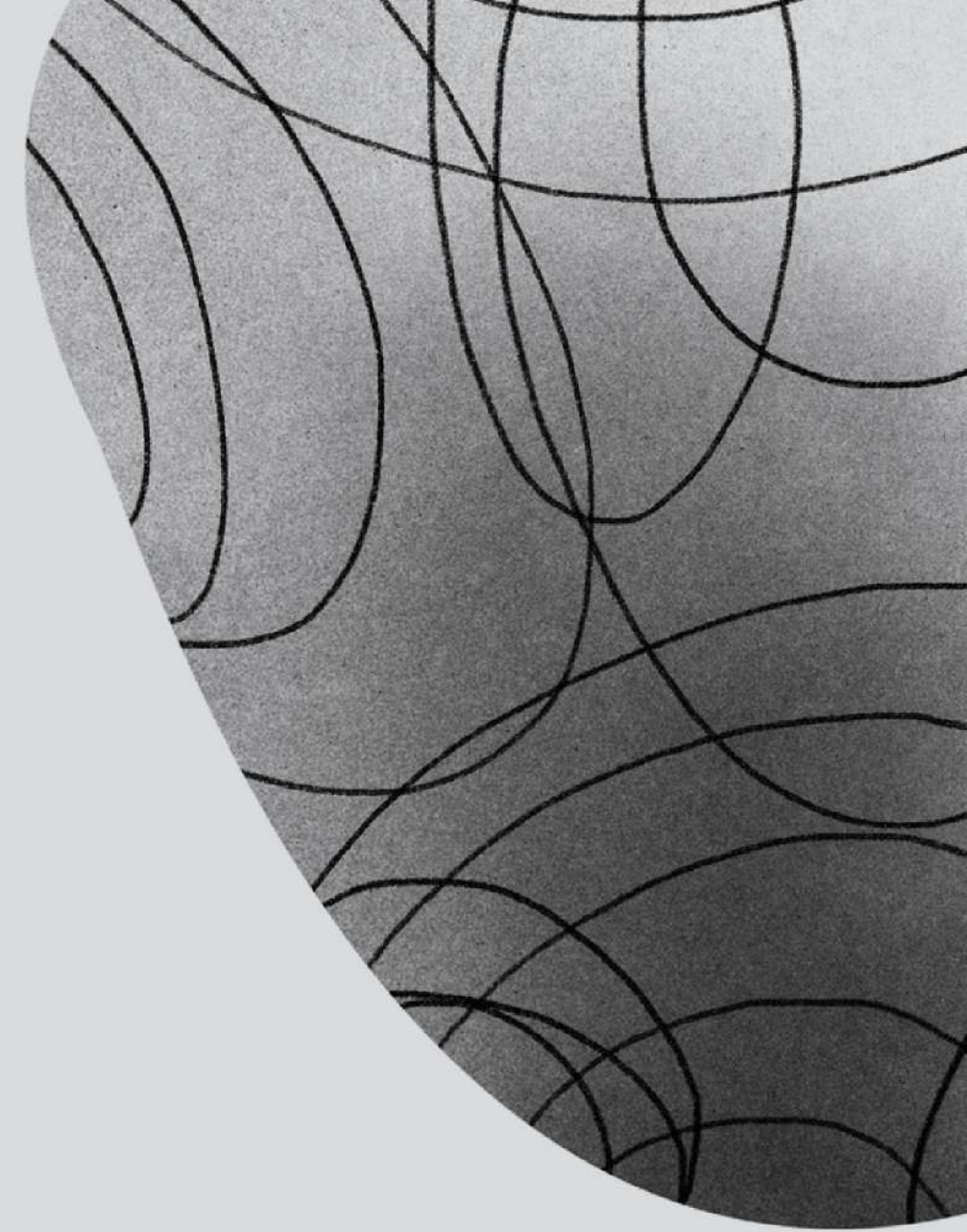


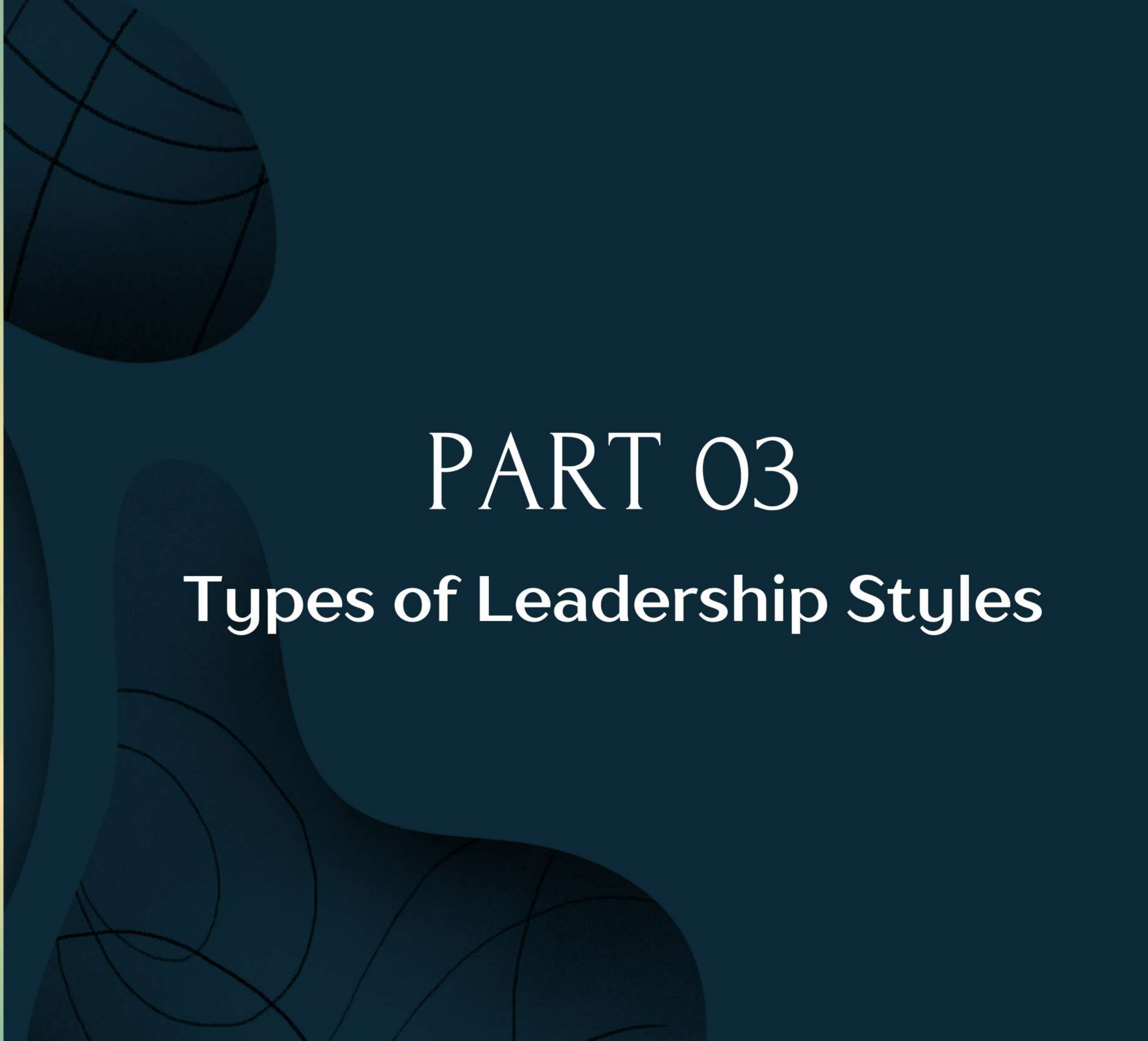
PART 02

Importance of Leadership

IMPORTANCE OF LEADERSHIP

- Leadership helps people reach their full potential and make a positive impact.
- Good leaders serve others, encourage teamwork, and create a supportive environment.
- Leaders have a clear vision and direction, motivating individuals to reach their full potential.





PART 03

Types of Leadership Styles

TYPES OF LEADERSHIP

Visionary Leadership

visionary leaders have a vision of where a company or organizations should be.

Servant Leadership

servant leaders believe in people first.

Transformational Leadership

Is a style in which the leader inspires and motivates employees to produce a change in the organization.

Democratic Leadership

Is a form of leadership where decision-making is shared with members of a group.

CONT...

Authoritative Leadership

In Authoritative leadership, the boss or manager makes all the decisions.

Laissez-Faire Leadership

Is a hands-off style of leadership.

Coaching Leadership

Is focused on developing subordinates.



PART 04

Key Leadership Qualities



KEY LEADERSHIP QUALITIES

Vision

A leader should have a clear vision of the future and be able to articulate it to others.

Integrity

Leaders should lead with honesty, authenticity, and strong moral principles.

Humility

leaders should be willing to listen, learn from others, and put the needs of their followers before their own.

Empowerment

Effective leaders empower their followers by providing them with the tools, resources, and opportunities to succeed

CONT...

Communication

Leaders should be effective communicators, able to express their ideas clearly and listen attentively to others

Emotional Intelligence

Leaders should be self-aware, able to manage their emotions, and empathetic towards others.

Courage

Leaders should have the courage to take calculated risks, make difficult decisions, and face challenges head-on.

Continuous Learning

leaders should be lifelong learners.

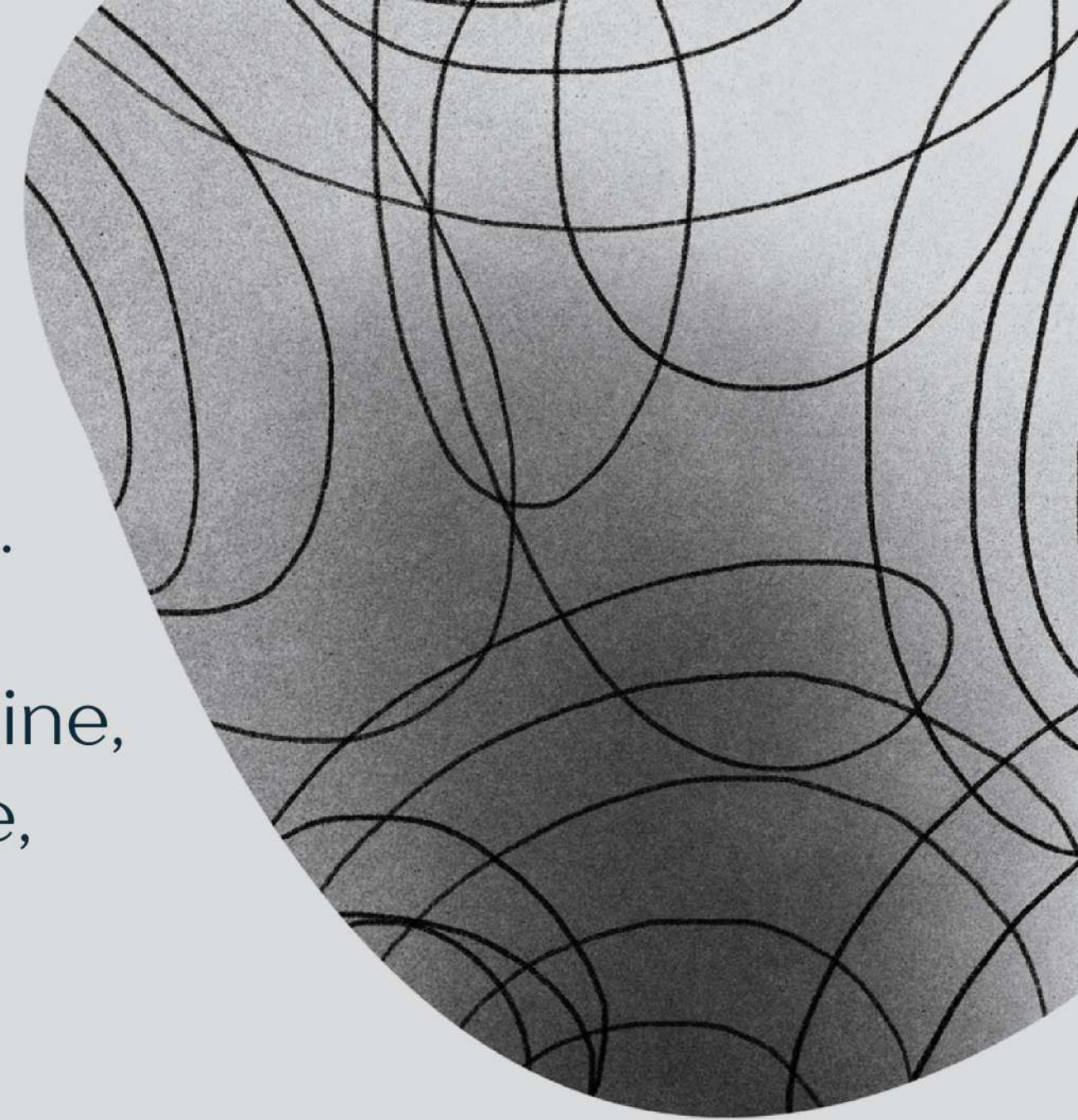


PART 05

Self Leading

Self Leading

- Self-leading is a fundamental aspect of leadership.
- It involves self-awareness, personal growth, discipline, integrity, emotional intelligence, clarity of purpose, and self-care.
- Leading self serves as the foundation for leading others, as it sets an example, builds trust, and provides a strong framework for effective leadership.





PART 06
Leading others

LEADING OTHERS

- Leading others means inspiring, influencing, and guiding individuals towards a common purpose.
- It involves serving and empowering others, fostering collaboration, and building relationships based on trust and respect.
- By leading others with purpose and integrity, leaders contribute to the success and fulfillment of their team members, creating a positive and collaborative culture that drives the achievement of shared goals.





PART 07

How to Find Your Leadership Superpower?

HOW TO FIND YOUR LEADERSHIP SUPERPOWER ?

Self-Assessment

Take time for self-reflection to assess your strengths, weaknesses, values, and passions.

Seek Feedback

Request feedback from trusted individuals to gain insights into your leadership style and areas for improvement.

Embrace Authenticity

Embrace your authentic self, appreciating your unique qualities, experiences, and perspectives.

Continuous Learning

Commit to ongoing personal and professional development.

CHALLENGES IN LEADERSHIP

Self-awareness and Personal Growth

Leaders need to be self-aware and continuously work on their personal growth.

Effective Communication

Communication is a fundamental skill for leaders.

CONT...

Building and Leading Strong Teams

Leaders face the challenge of building and leading strong teams.

Adaptability and Change Management

Leaders must be adaptable and comfortable with change.



PART 09

The Power of "We"

THE POWER OF "WE"

Collaboration

Great leaders recognize that collaboration is essential for success.

Shared Vision

Great leaders inspire their teams by articulating a compelling vision and involving team members in its development.

Empowerment

Great leaders empower their team members.

Teamwork

Strong leaders recognize the value of teamwork.

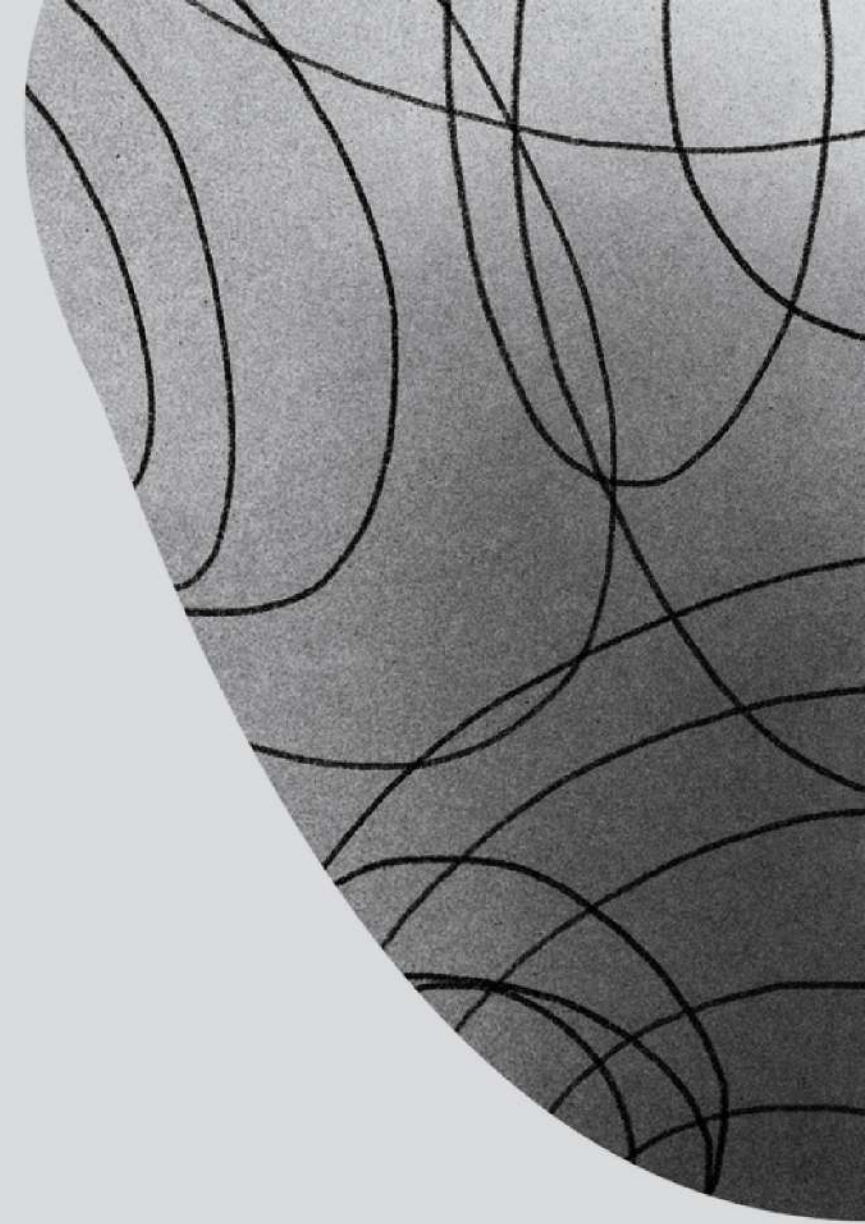
The background is a dark teal color with several abstract white line patterns. One pattern in the top left consists of overlapping curved lines. Another pattern in the bottom right consists of a grid of intersecting lines. There are also some solid white shapes, like a large curved shape on the left and a smaller one on the right.

PART 10

Conclusion

CONCLUSION

- Leadership is a transformative force that brings out the best in people and creates positive change.
- Effective leadership involves influencing, inspiring, and serving others towards a common purpose.
- Leading oneself is the foundation for leading others, emphasizing self-awareness, personal growth, and emotional intelligence.
- Leaders don't create followers, they create more leaders.



The background is a solid medium blue color. On the left side, there are several overlapping organic, blob-like shapes in a darker shade of blue. One of these shapes contains a pattern of thin, dark blue lines that form a complex, overlapping grid or web-like structure. The text 'THANK YOU!' is positioned in the lower right quadrant of the image.

THANK YOU!