



AI Automation with n8n & AI Agents

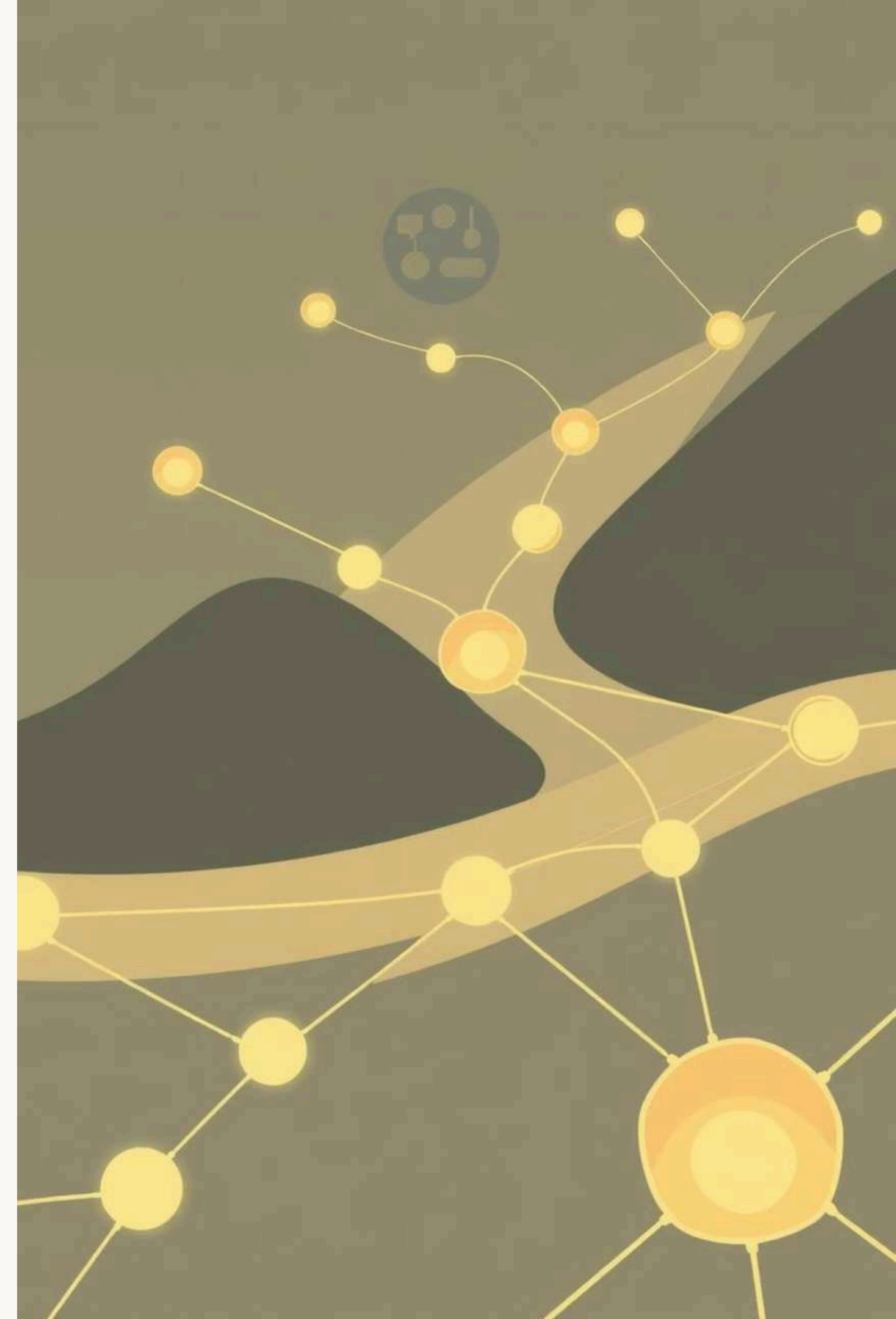
From Rules-Based Workflows to Intelligent Automation

Amanuel Shiferaw

Aug 7, 2025

Presentation Agenda

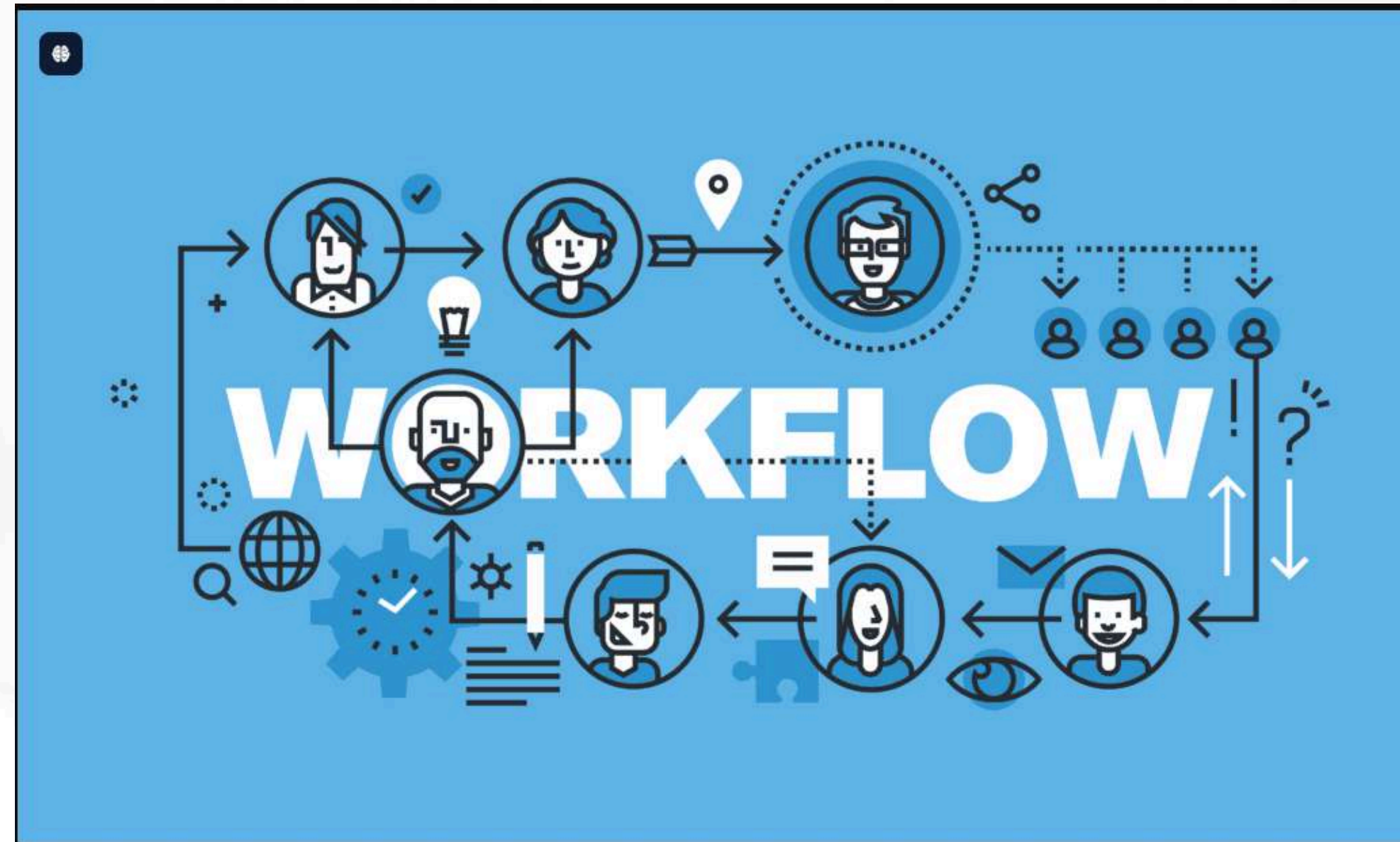
- **Workflow Automation Fundamentals:** Grasp the core concepts and benefits.
- **n8n: The Automation Powerhouse:** Discover a flexible, open-source platform.
- **AI Agents & Tool Calling:** Explore intelligent decision-making and action.
- **n8n's AI Capabilities:** How n8n empowers dynamic AI workflows.
- **Future Trends:** What's next for AI in automation.



WHAT IS WORKFLOW?

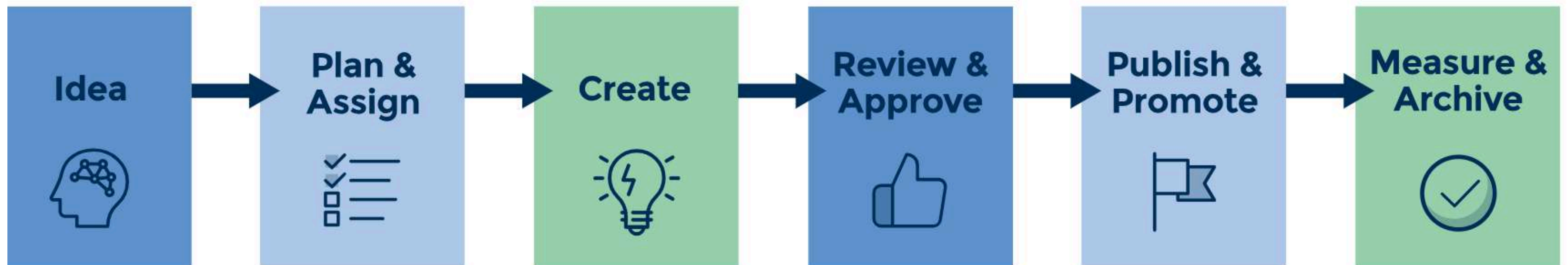
▶ A workflow is a series of steps or tasks that must be completed in a specific order to achieve a particular outcome.

▶ It provides a clear, repeatable path for a process, ensuring consistency and efficiency.

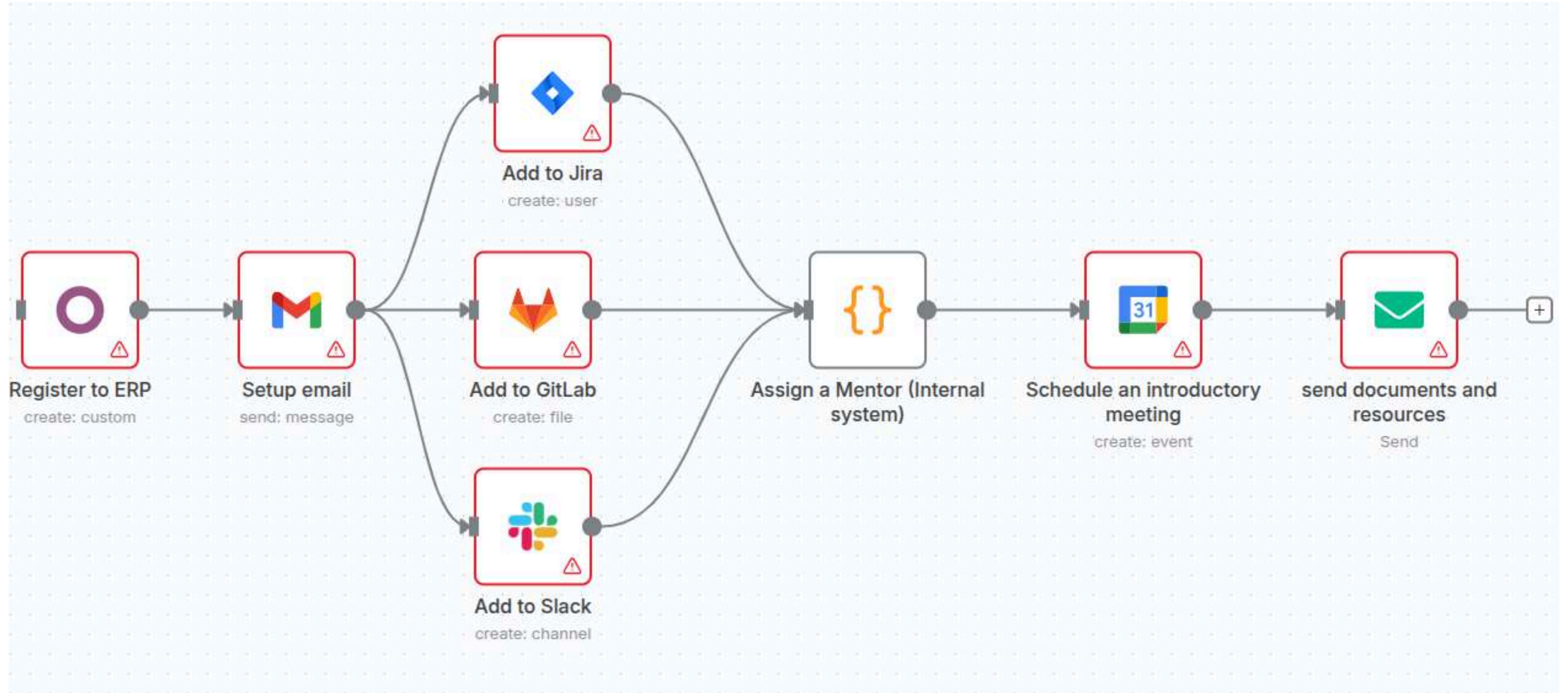


E.g of workflows


Marketing Workflow Process




e.g Onboarding a new employee workflow




COMPONENTS OF A WORKFLOW



Triggers are the events that start a workflow. This could be an incoming email, a new entry in a database, or a button click.



Actions are the specific tasks that the workflow performs. These could be sending a message, creating a file, or updating a record.

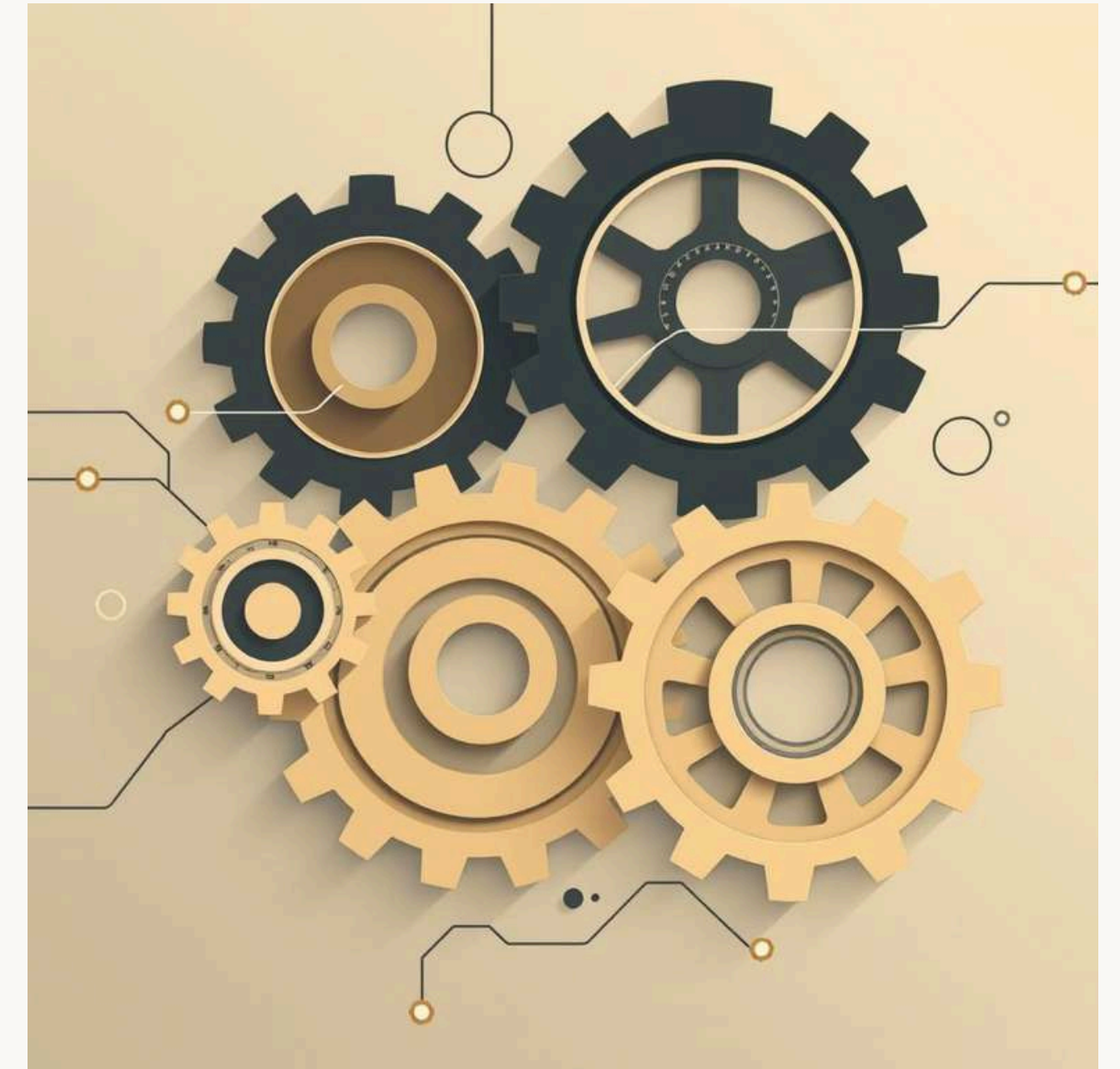


Conditions are the logical checks that determine the path of the workflow. For example, a workflow might check if an invoice amount is over a certain threshold before sending it for approval.

What is Workflow Automation?

Workflow automation leverages technology to execute tasks and processes with minimal human intervention. It transforms manual, repetitive work into streamlined, efficient operations.

The primary goal is to boost operational efficiency, significantly reduce human error, and free up valuable human capital for more strategic tasks. It's a key driver of digital transformation across all industries, from finance to healthcare.

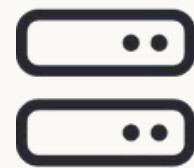


Common Types of Automation



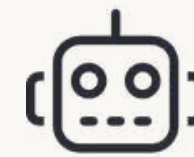
Business Process Automation (BPA)

Automates structured business tasks, like invoice approvals, customer onboarding, or data routing between systems. Focuses on optimizing end-to-end processes.



IT Automation

Automates IT operations, including server provisioning, network configurations, incident response, and routine log monitoring. Ensures system reliability and security.



Robotic Process Automation (RPA)

Employs "bots" to mimic human interaction with digital systems. Ideal for repetitive, high-volume tasks like data entry, form filling, or report generation on legacy systems.



The Limits of Traditional Automation

Rigid Rules, Fragile Systems

Traditional automation relies on predefined rules, struggling immensely with unstructured data like email content, scanned documents, or natural language inputs. Any deviation breaks the workflow.

Lack of Adaptability

It demands constant manual updates and reconfigurations for new scenarios or changing business requirements. It can't learn or adapt to novel situations independently.

Limited Decision-Making

These systems lack the cognitive ability for complex, nuanced decision-making. They require human intervention for exceptions, ambiguity, or strategic choices.

AI Automation: The Game Changer

AI introduces a paradigm shift, enabling systems to learn, reason, and adapt, tackling complex, unpredictable tasks that traditional automation cannot.

AI vs. Traditional Automation: A Comparison

Feature	Traditional Automation	AI Automation
Logic Base	Fixed, rule-based logic	Adaptive, learning AI models
Data Handling	Structured, predictable inputs	Unstructured, dynamic inputs (text, voice, image)
Decision Making	Binary, predefined paths	Cognitive, nuanced reasoning
Common Use Cases	Data entry, report generation	Chatbots, predictive maintenance, fraud detection



INTRODUCTION TO N8N

Automate
without limits

WHAT IS N8N?

- **Open-Source Workflow Automation:** Low-code/no-code platform for connecting apps and APIs.
- **Visual Builder:** Drag-and-drop "nodes" to design workflows (e.g., Slack → Google Sheets → Email).
- **Self-Hostable:** Run it on your own servers for full data control and customization.
- **400+ Integrations:** Pre-built nodes for popular tools (Salesforce, GitHub, etc.).

Why n8n?

The Power of Integration and Intelligence



Low-Code + AI

Visually design complex workflows while seamlessly integrating LLM-powered AI agents for advanced decision-making.



Dynamic Tool Calling

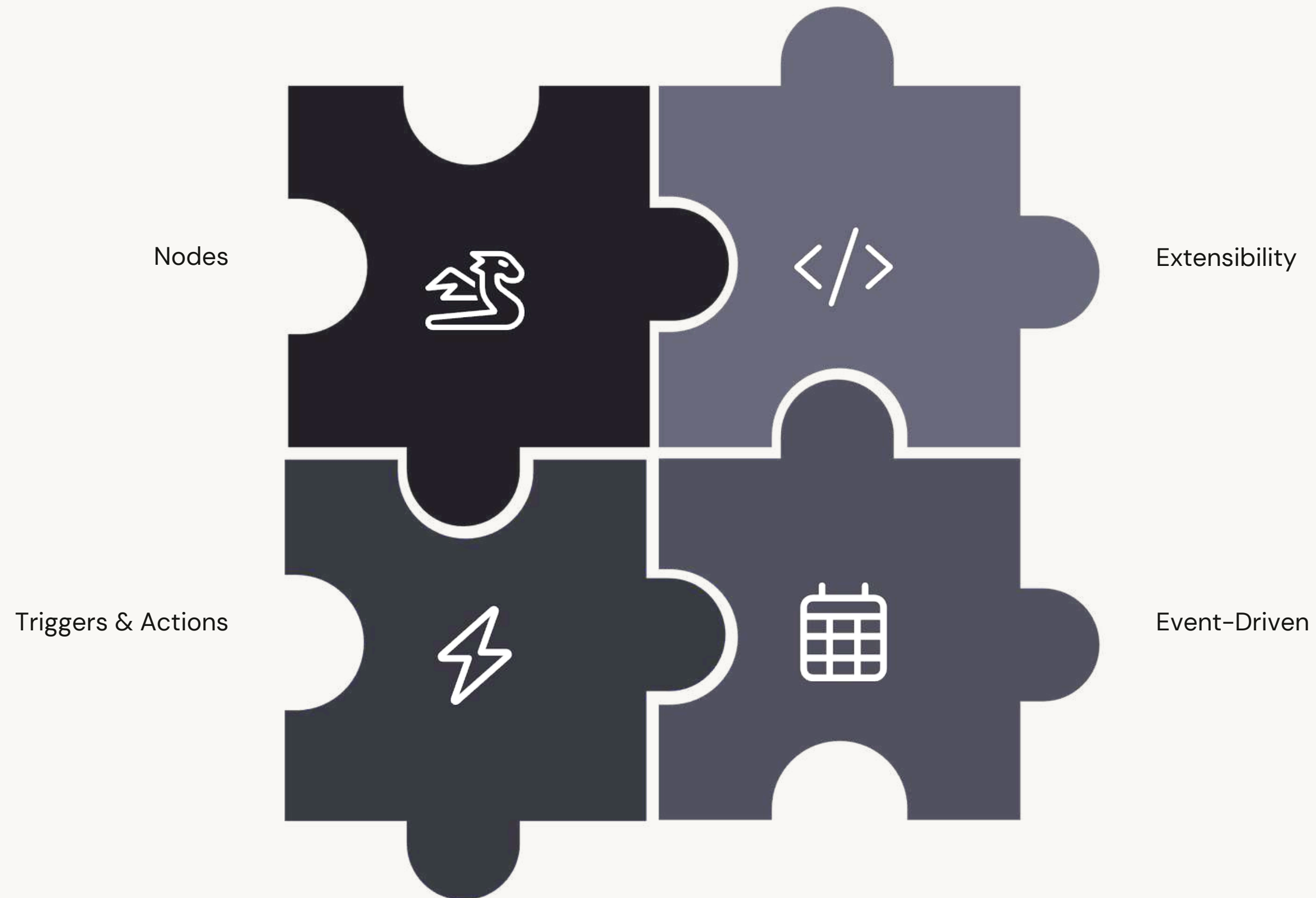
AI agents can dynamically select and utilize any of n8n's 400+ nodes or external APIs to perform actions based on their reasoning.



Self-Hosted Flexibility

Maintain full control over your data and infrastructure with self-hosting options, ensuring privacy and robust customization.

Inside n8n's Architecture



Key n8n Advantages



Open-Source Freedom

No vendor lock-in, full transparency, and the flexibility to adapt the platform to your exact needs.



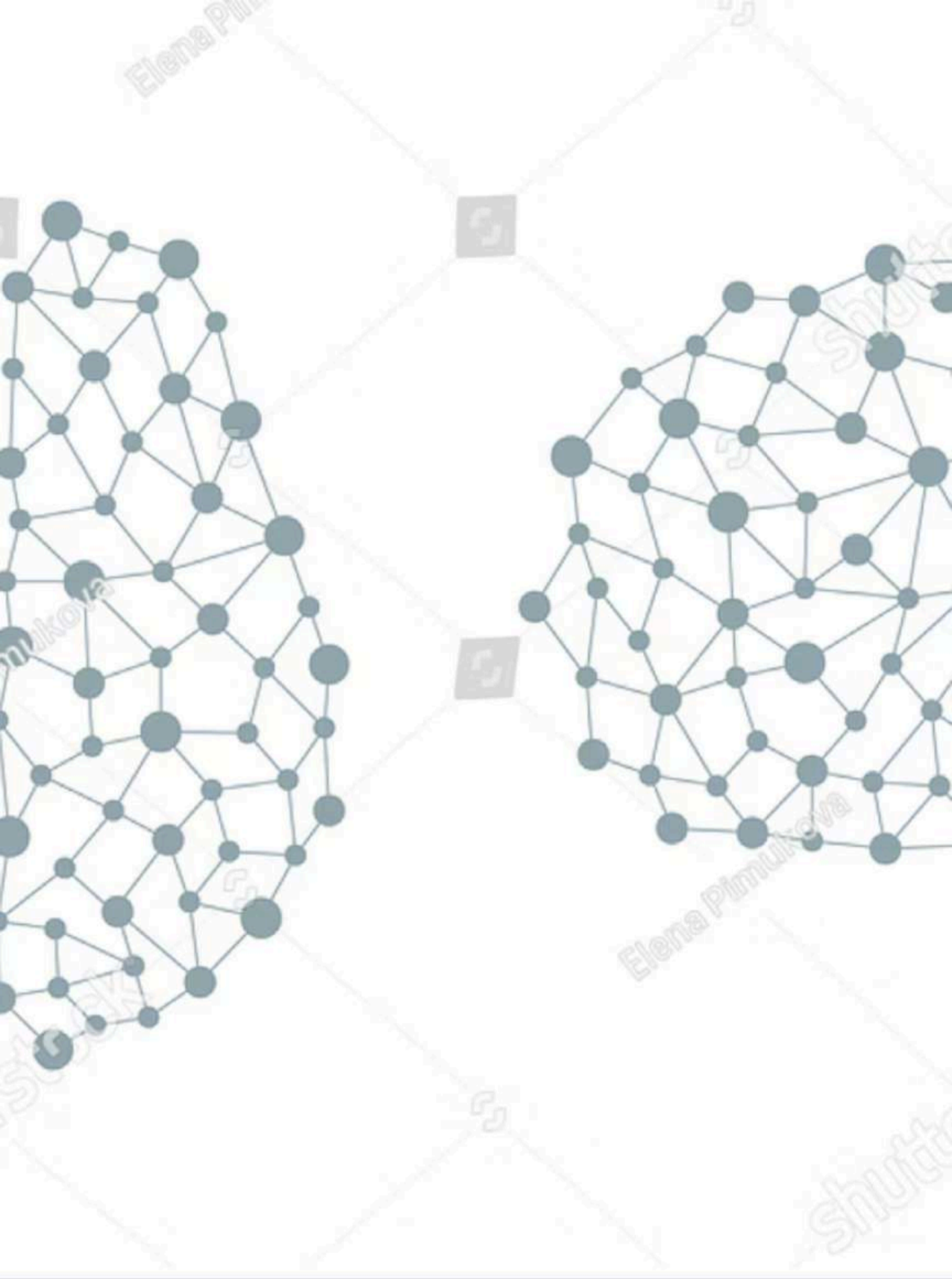
Cost Control

Pay per execution model allows for predictable scaling without hidden fees. Optimize resource usage efficiently.



Community-Driven Innovation

Benefit from a vibrant global community contributing shared nodes, templates, and best practices, accelerating your automation journey.



Unlocking Automation: n8n AI Agents

Revolutionizing how technical professionals build intelligent, automated workflows.

THE POWER OF AUTONOMY

Introducing n8n AI Agents



Autonomous Execution

Intelligently breaks down complex prompts into executable steps.



Tool-Aware Intelligence

Leverages n8n nodes and external APIs as powerful "tools."

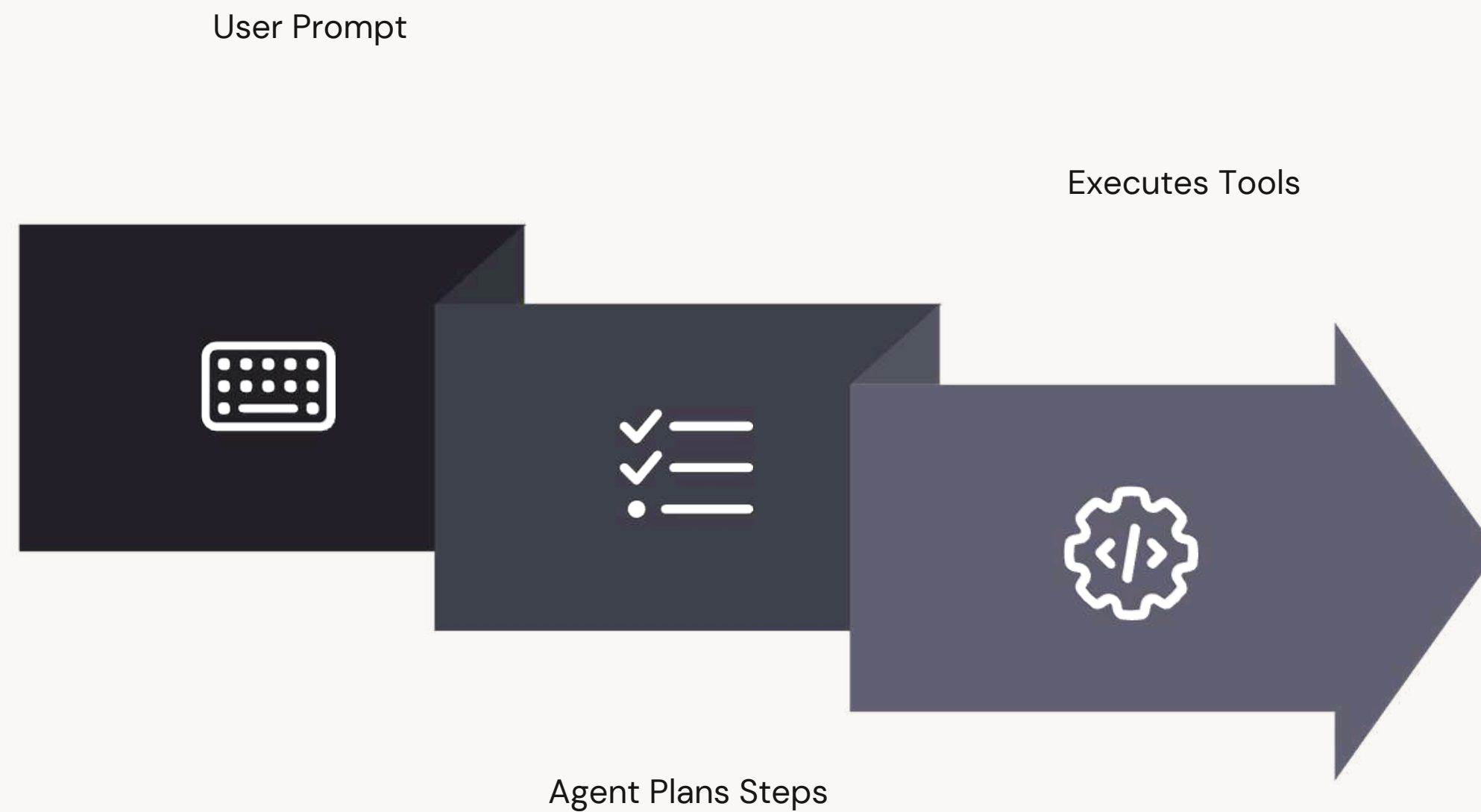


Collaborative Systems

Enables multi-agent architectures for advanced automation.

CORE MECHANISM

How Tool Calling Works



STANDARDIZATION

Model Control Protocol (MCP)



Standardized Tool Calling

Leverages Anthropic's protocol for seamless AI-tool communication.



n8n as MCP Server

Exposes your n8n workflows as callable tools for external AI models.



n8n as MCP Client

Enables n8n agents to call and integrate with external AI tools and plugins.

REAL-WORLD APPLICATION

MCP in Action: Customer Support

A customer support agent, powered by n8n AI, can seamlessly handle complex requests.

1. **User Asks:** "Cancel my order #123 and refund."

1. **MCP Flow:** Agent calls the n8n MCP Server (an order lookup node), validates the request, and triggers a refund workflow.

1. **Result:** Fully automated resolution without human intervention.

TRANSFORMATIVE POTENTIAL

Diverse Use Cases for n8n AI Agents



IT Operations

Automate alert triage and ticket creation for faster issue resolution.



Sales Enablement

Enrich sales leads with data and schedule automated follow-ups.



Marketing Content

Generate and publish blog posts directly from research data.

From IT to Marketing, n8n AI Agents streamline operations across the enterprise.

COMPETITIVE EDGE

Why n8n Excels Over Competitors

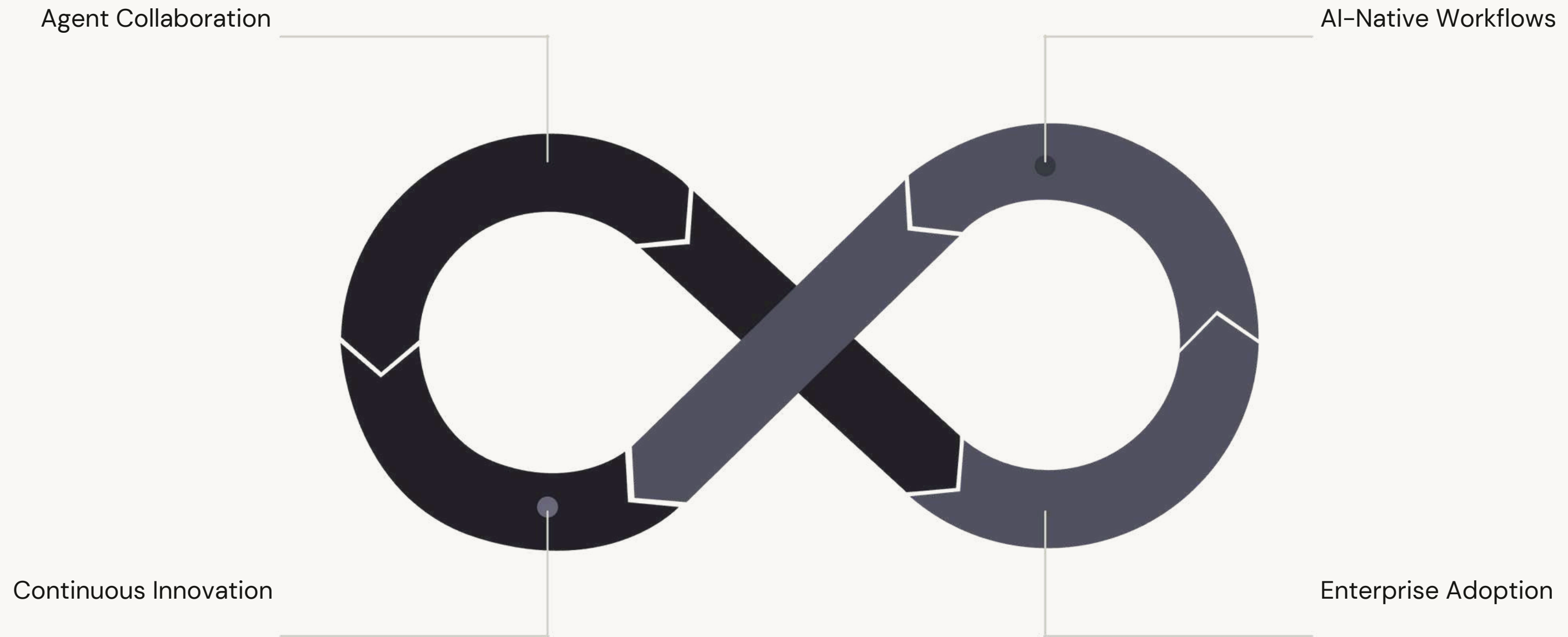
While competitors like Zapier and Make offer automation, n8n provides distinct advantages that set it apart.

- **Native AI Agents:** Built-in tool calling capabilities for advanced AI integrations.
- **Self-Hosting Freedom:** Complete data control and privacy through on-premise deployment.
- **Transparent Pricing:** No hidden per-action fees, offering predictable costs.



VISION FORWARD

The Future of n8n



n8n is continuously evolving, pushing the boundaries of what's possible in workflow automation.

Conclusion & Q&A

n8n seamlessly bridges traditional rules-based automation with cutting-edge AI, enabling true end-to-end solutions.

Call to Action: Explore tool calling with MCP today and transform your workflows!

Questions?